

Digital Planning

30 minute update



Introduction



Data Standards

Not as boring as it sounds

1	
2	key_code
3	amenity_open_space_(ne2i)
4	public_open_space_(sal.up3)
5	countryside_recreation_sites
6	playground
7	open_space_(c3)
8	recreation_open_space_r1
9	green_park
10	recreation_and_open_space_(l2,_c7)
11	n1_green_space
12	linked_open_space_system_(loss)
13	greenspace_fields_private_(b)
14	designated_open_space
15	green_infrastructure_network_opportunity_zone:_lower_great_ouse_river_valley_
16	I4_Open_Space_Sport_and_Recreation
17	city_green_space_dev27
18	existing_greenspace_to_improve_and/or_maintain
19	hd12_amenity_open_space
20	recreation around





What do Government say...

“processing of planning data”

“setting data standards”

“data is held consistently and transmissible”

“provided digitally”

“approved data standards”

“excessive manual re-entry”

“make certain planning data available”

“data standards”

“openly available”

“consistent and more visual manner”

Processing and provision of planning data ©

Data	<p><u>Processing</u> Power to enable the Secretary of State to regulate the <u>processing of planning data</u> by <u>setting data standards</u> to apply to the data produced and held by planning authorities.</p> <p>This power is designed to ensure <u>data is held consistently and transmissible</u> through the planning system and can be easily reused for other purposes by third parties.</p> <p><u>Provision</u> Power to enable planning authorities to require data arising from participants in the planning system to be <u>provided digitally</u> to them, in accordance with <u>approved data standards</u>, unless it would be unreasonable to expect a particular participant to do so.</p> <p>The power is designed to ensure that local authorities are not overwhelmed by submissions in formats incompatible with data standards, resulting in <u>excessive manual re-entry</u> of data.</p>
-------------	--

Planning data to be made publicly available ©

Publishing	<p>Power to require planning authorities to <u>make certain planning data available</u> to the public under an approved open licence.</p> <p>This power is designed to ensure that the data held and created under the <u>data standards</u> power, is <u>openly available</u> and published for use by parties other than the planning authority and the Secretary of State. It is expected that the combination of the data standards and publication powers will result in information being provided in a <u>consistent and more visual manner</u> to the public by planning authorities.</p>
-------------------	---

New Location Plan Feature

The process of locating a site on the Planning Portal has been updated.

Instead of plotting the red line boundary externally, users can draw or upload the site's location directly within the service.

The spatial file is then sent to LPAs, eliminating the need to redraw the boundary.

Launched 2 May 2023



Why have we done it?



**Supports Government digital planning reform
'Data, not documents'**



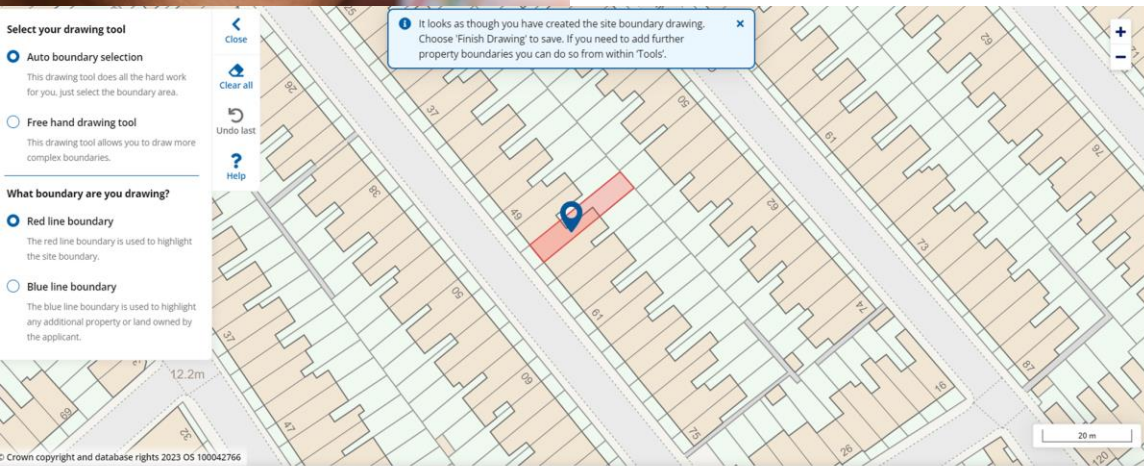
Reducing invalidation



Improving efficiency



Consistent approach



What's Happening?

PlanTech Latest

Funding awarded to council-led initiatives advancing innovative digital planning services



**DIGITAL
PLANNING**



Department for Levelling Up,
Housing & Communities





Biodiversity net gain – what you need to know?

An additional specific 'biodiversity net gain' question to all full and outline planning applications

This now guides you through to:

- State whether the proposal is not subject to the requirements, based on the exemptions allowed by government (including 'small sites' while they are not covered); or
- Provide relevant details to satisfy the requirements and refer to any additional supporting information that they will be providing.



Easily comply with the new mandatory biodiversity net gain requirements

Biodiversity net gain

Do you believe that, if the development is granted permission, the general Biodiversity Net Gain Condition (as set out in Paragraph 13 of Schedule 7A of the Town and Country Planning Act 1990 (as amended)) would apply? * Required

Yes
 No

Please add all the exemptions or transitional arrangements that apply and provide a reason why

Exemption	Reason for selecting exemption
Exemption * Required	
Planning applications submitted before commencement of Biodiversity Net Gain (20th February 2024)	
Temporary exemption for non-major developments (small sites exemption)	
Development subject to the de minimis exemption (development below the threshold)	
Self-built and custom built development	
Development of a biodiversity net gain site	
Retrospective planning permission	
High-Speed Railway development	
Reason for selecting exemption * Required	

[Add another +](#)

Note: Please read the help text for further information on the exemptions available and when they apply

Dashboard Saved sites **Map view** Location search Give us feedback Community ? HQ

Planning Applications Metric Imperial Google Satellite Annotations Land Assembly

▼ Saved Sites

▲ Planning Applications

Show available boundaries

R Residential

C Commercial

O Other

Filters

Applications within the last years

Number of homes or more

Status: [Select all](#)

Approved

Withdrawn

Pending

Rejected

Unknown

Type:



Connecting existing systems to integrate new ways of working...

A modern interface and data standard

We've been facilitating application submissions for 20 years. So, what's new?

- A resilient, robust standard format used for transmitting data online
- More efficient methods that use modern coding practices:

RESTful APIs and JSON data instead of legacy SOAP messages and XML data

- It's secure and scalable, allowing change to be managed in an agile way
- Follows Government Data standards and the Technology Code of Practice
- Provides all the information collected as part of the application for use by LPA systems, including:
Question fields; Site location boundaries; Fee details; Supporting documents
- Working in partnership with LPAs and their suppliers on Planning Software Improvement projects.

Delivering a modern, standard digital planning system nationwide.

Connecting existing systems to integrate new ways of working...

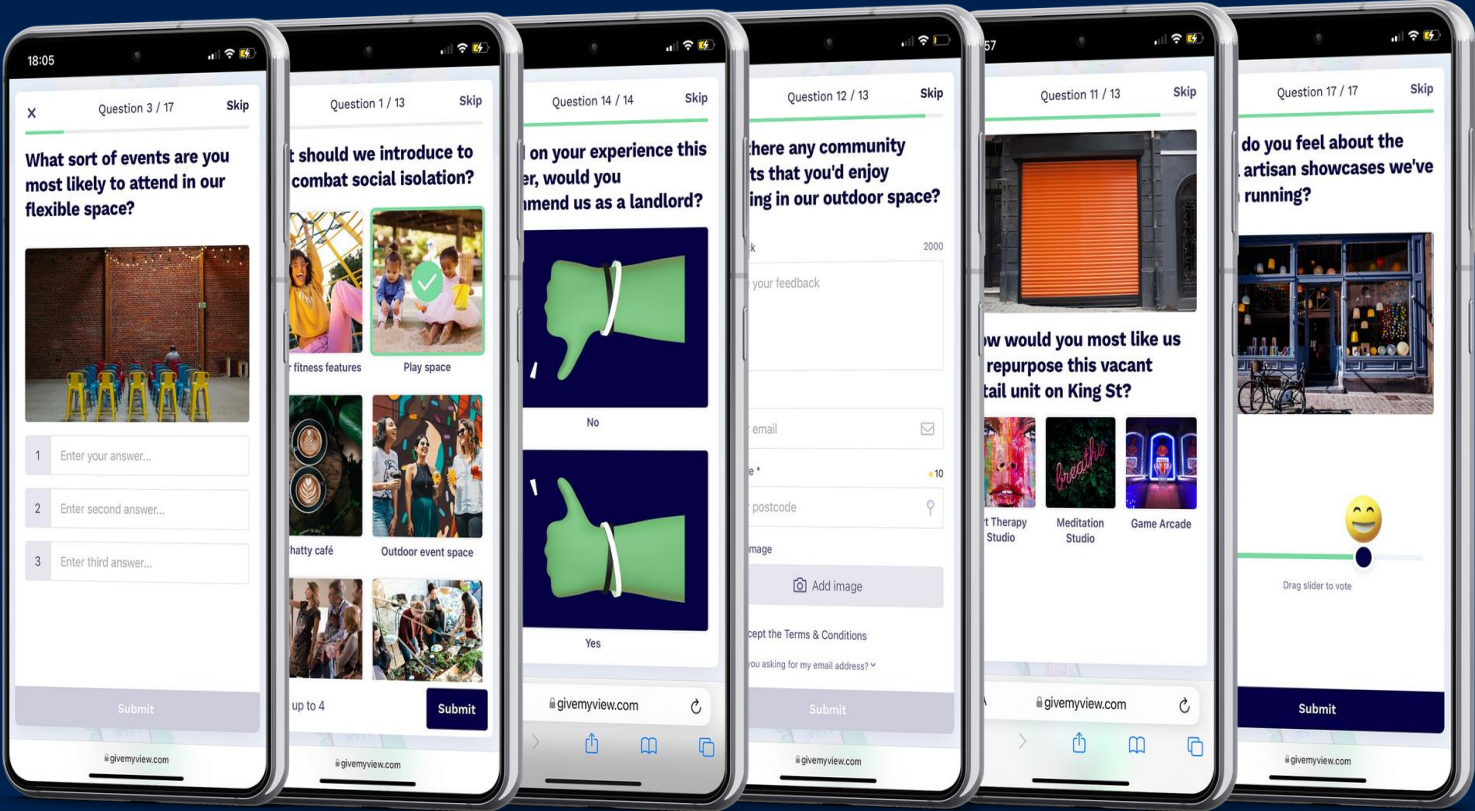
A modern connector and data standard

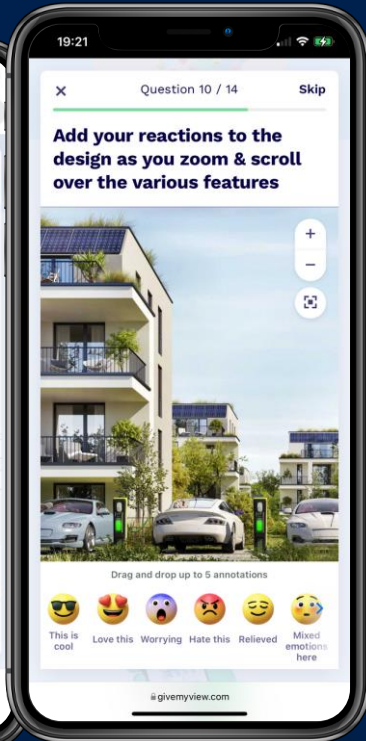
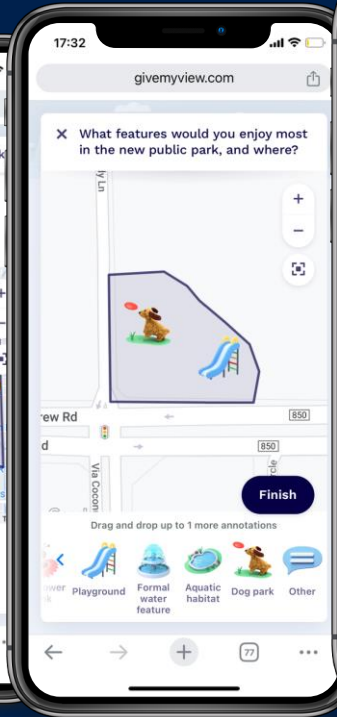
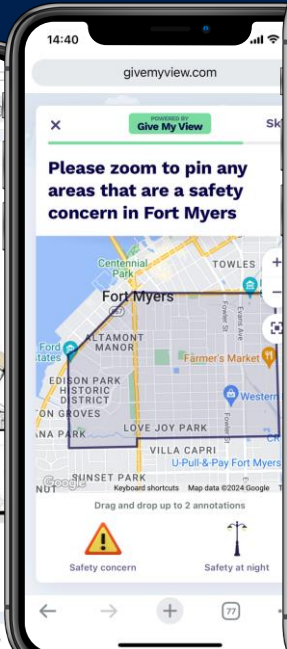
Longer-term it has many additional benefits to improve digital service delivery:

- First steps towards bi-directional information sharing between Planning Portal, TerraQuest's suite of products, and Local Authority systems and services
- Improved 'Amendment' functions for a more efficient validation process
- Updates on application status and progress provided to users on the Planning Portal
- Associates/partners of Local Authorities and/or user can also be setup to receive notifications
- Additional data from legislative requirements for specialist information *e.g. Biodiversity; Fire Safety*
- Extensible to allow transition of supporting information from documents to data *e.g. CIL / IL*

All helping to deliver greater transparency to the applicant, agent and Local Authority, enabling greater efficiency throughout the planning process and reducing avoidable contact and manual effort.

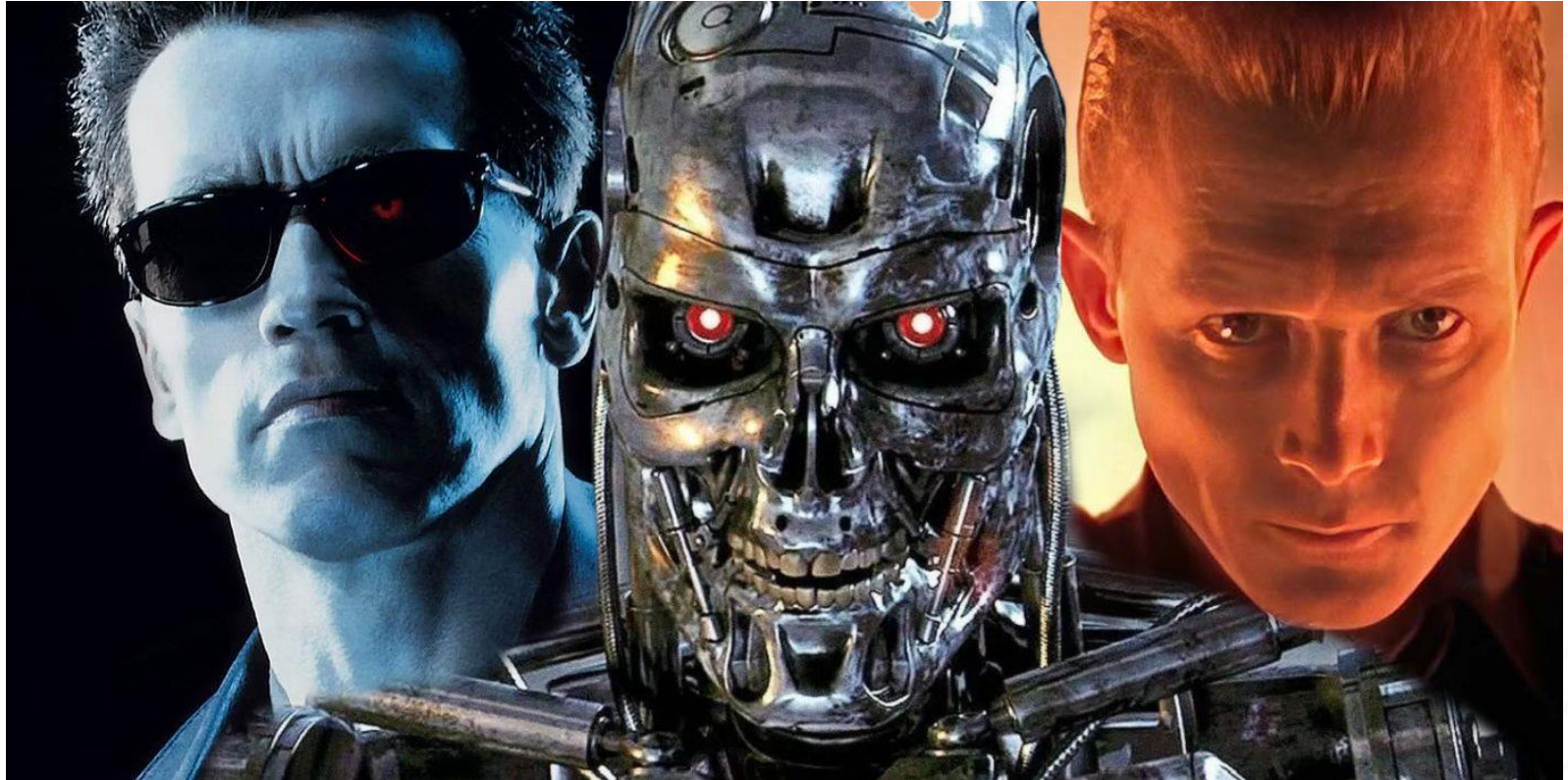
Digital Engagement – Not just for Lockdowns





AI in Planning?

Is it really the Rise of the Machines?



How does it affect you?

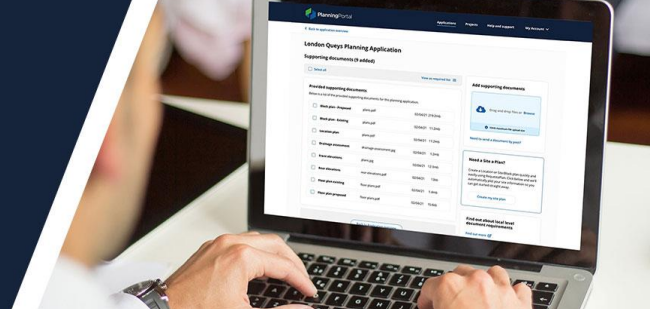
What tools can you tap into?



Planning Portal

Planning Portal

Roadmap for 2023/24



Location Plan Integration - May 23

Creation of the location polygon within the Planning Application process, enabling the polygon data to be passed to the Local Planning Authority



Location Plan feature Polygon Capture

- ✓ Reduce invalidation
- ✓ Passing data not documents
- ✓ Efficiency gains
- ✓ Consistency

New Modern API Connector - May 23

New process for transferring applications from the Planning Portal to the Local Planning Authorities



New Connectors JSON & GeoJSON

- ✓ Modern technology
- ✓ Data and geographical data
- ✓ Government recommended standard

Amendment Process Improvement & Bi-directional integration

User experience improvements for making amendments to a submitted application which will benefit applicants, agents and Local Planning Authorities



Amendment Process Improvement Upload "delta" not "full" Application Bi-directional integration For status updates throughout processing

- ✓ Efficiency gains
- ✓ Only passes the amendment delta
- ✓ Improved user journey

Re-platforming Building Control with standalone payment service - 2024

Joined-up application processes to share data across services with ability to nominate and transact payments



Re-Platforming Building Control with payments Improving service delivery - in discovery stage

- ✓ Efficiency gains
- ✓ Improved user journey
- ✓ Single sign-on for multiple services



Spatially joining up Development Management & Planning Policy



DLUHC Planning Data Platform 'open data standards' presents an opportunity to front-load making an application with Planning Policy by understanding site specific policies and designations.

This is being evaluated as part of the successful PSIF bids.

Many benefits to all stakeholders:

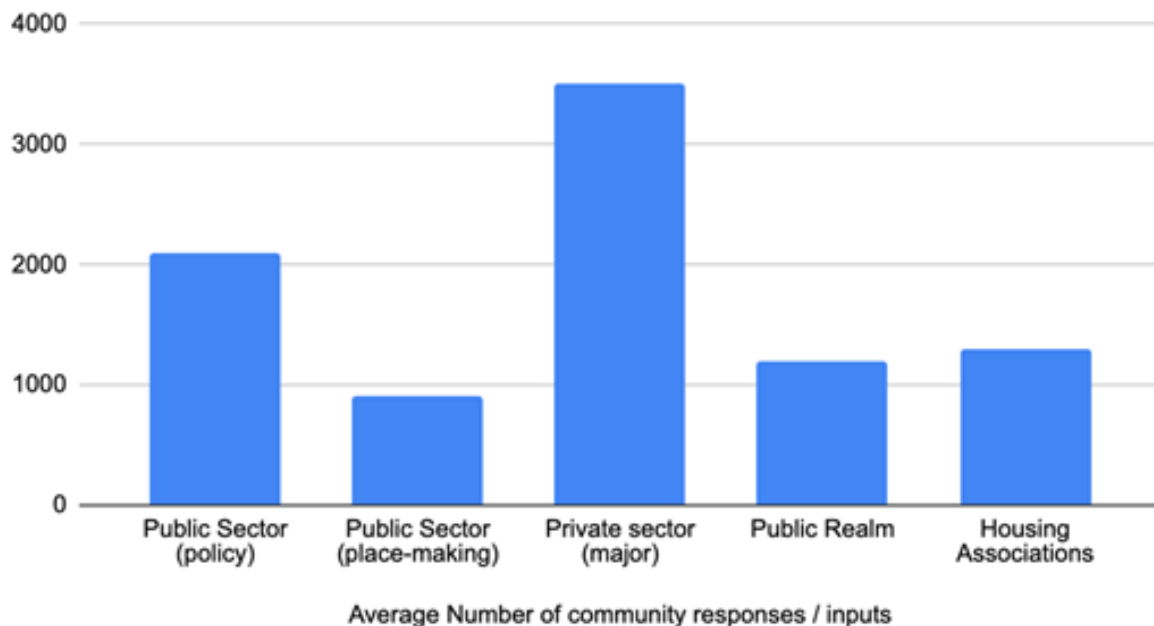
- Inform the planning process and whether some proposals are PD or require a planning permission
- Access to relevant policy information to achieve a complete, high-quality application providing all required supporting information
- Identify development sites (SHLAA, Brownfield register etc)

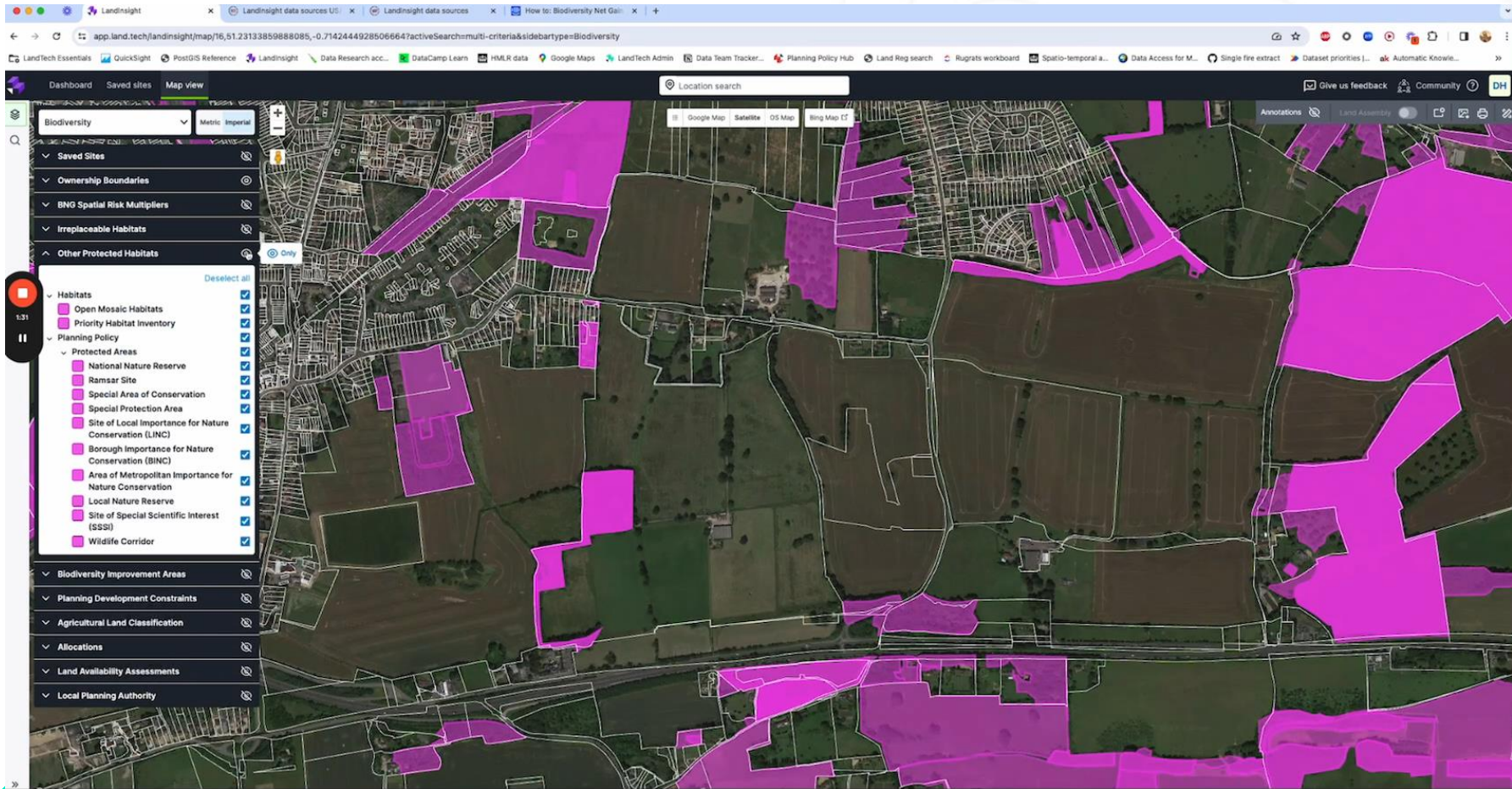
Applicants: Research site feasibility & evaluation

LAs: Plan-led so fundamental to improving validation and processing applications

Using digital service delivery to increasing efficiency and reduce resource and cost for all!

Average Number of community responses / inputs





Dashboard Saved sites Map view Location search Give us feedback Community OK

Filters Results Saved searches

Map Draw Radius Council

Parcel Size is All

Ownership Type is All

Tenure is one of Freehold

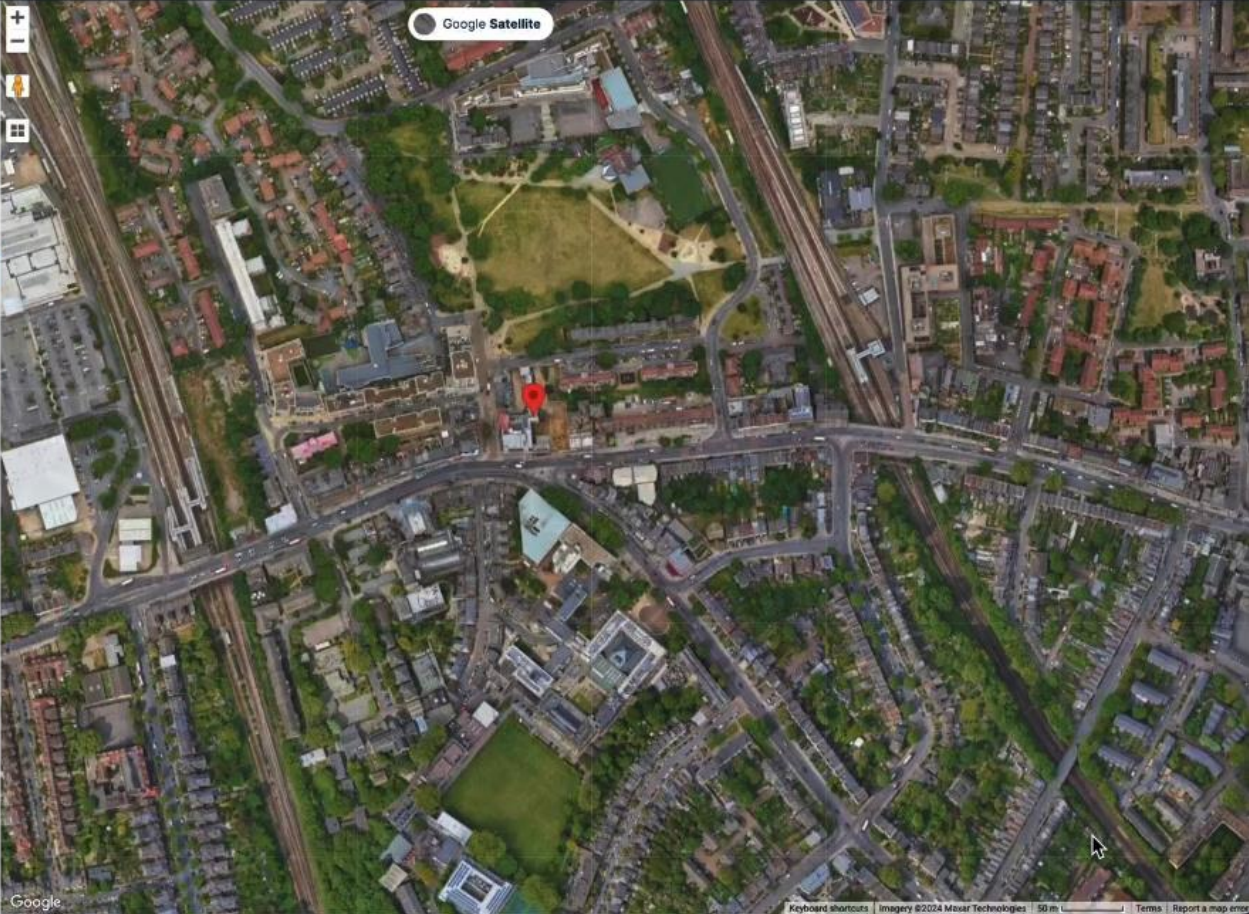
Use Class is undefined

+ Add Use Class Contains

publ

- F1 - Learning and non-residential institutions
 - F.1(d) Public libraries or public reading rooms
 - F.1(f) Public worship or religious instruction
- Sui Generis
 - Public Car Parking
 - Public House / Bar / Nightclub

Clear Apply



Google Satellite

Google

Keyboard shortcuts Imagery ©2024 Maxar Technologies 50 m Terms Report a map error





Thank you

Harry@givemyview.com

Scan to book a meeting:



Delivering a digital future

We are a safe, trusted partner with over 20 years' experience

We are innovative, forward thinking, agile

We are here to help you – talk to us & get involved in shaping our services

***Get in touch @
Communications@planningportal.co.uk***

