



**RTPI Young Planners**  
Royal Town Planning Institute

# Young Planners' Conference

**11-12 October 2024**

.....  
**Cambridge**  
.....

# Handbook



# Welcome to the Young Planners' Conference 2024

Welcome to the Young Planners' Conference in Cambridge, where we will be discussing the topic of "Connecting Town and Country." We are excited to have you here in this historic city, known for its beautiful architecture and rich cultural scene. As we discuss urban and rural connectivity, we hope the city's charm will inspire new ideas and conversations with other Young Planners.

Cambridge is renowned for its academic excellence and intellectual heritage, providing an ideal setting for exploring the relationship between urban and rural areas. The city's iconic landmarks, such as the University of Cambridge's colleges, such as King's College and Trinity College, are a symbol of enduring architectural beauty and scholarly tradition. These landmarks are a testament to the city's ability to blend historical significance with modern-day relevance, mirroring our connectivity theme.

A further unique aspect of Cambridge is its abundance of green spaces, including Jesus Green, Lammas Land and Stourbridge Common – some dating back over 1,000 years. In the summer, you're likely to spot a cow or two roaming around town, as some are still used for grazing. Also, the city is surrounded by a ring of Green Belt, in addition to encircling rural villages close to the city.

During the conference, we will explore this complex dynamic and intersection of balancing such growth versus resources, which



will be addressed through our speaker panels, breakout sessions and study tours centring on the planning and delivery of housing, innovation, connectivity, and natural resources, historic and natural environments, plus transport and infrastructure requirements.

There will be numerous opportunities for networking and socialising with Young Planners from all over the UK. We are incredibly grateful for the generous support of our conference sponsors, as well as the invaluable contributions of our panellists, breakout facilitators, and study tour leads.

It has been a pleasure working with the dedicated Young Planners East of England Committee to organise this event, and I extend my heartfelt thanks to them for making this a fulfilling experience. We extend our gratitude to everyone at the RTPPI, our sponsors, and speakers for dedicating their time and expertise to the event, and we sincerely hope that everyone will have a rewarding experience at this year's conference.

Please share your experience on social media using the hashtag #YPCConf2024 and connect with other [Young Planners on the LinkedIn group](#).

With best wishes,  
**Errin Marshall MRTPI**  
Young Planners East of England Conference Chair



# Getting to know Cambridge



## Innovation

Cambridge is known for its cutting-edge research and technological advancements, particularly in computer science and biotechnology. The city is home to the Cambridge Science Park, which has fostered numerous groundbreaking discoveries and startups, including developing the first commercial DNA sequencing service. Other innovation landmarks include the Cavendish Laboratory, known for its pioneering work in physics, and the Wellcome Genome Campus, a hub for genomics and biodata research.

## Education

Cambridge's reputation as a centre of academic excellence is due primarily to the University of Cambridge, founded in 1209 and is one of the world's oldest and most prestigious universities. The university has produced numerous Nobel Prize winners, world-renowned scholars, and influential figures across various fields. Notable landmarks include the University of Cambridge's colleges, such as King's College, Trinity College, and St. John's College, which are known for their stunning architecture and historical significance.

## History

Cambridge's rich history is evident in its architecture, including the stunning King's College Chapel, a prime example of English Gothic architecture. The city's historical significance is also reflected in landmarks such as the Round Church, which dates back to the 12th century, and the Fitzwilliam Museum, housing a vast collection of art and antiquities. The Cambridge University Botanic Garden, established in 1831, is another notable landmark where visitors can explore various plants and landscapes.

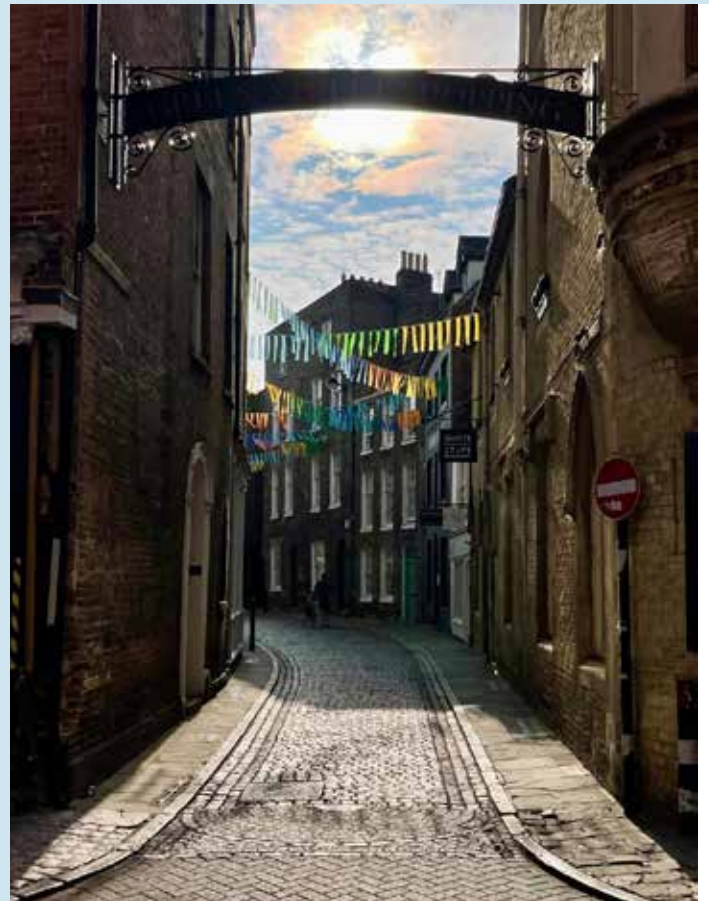


## Culture

From the world-class art at the Fitzwilliam Museum to the global celebration of music at the Cambridge Folk Festival, the city offers something for everyone. The Cambridge Corn Exchange is a popular music and arts venue, and the Cambridge Arts Theatre is known for its diverse theatrical productions.

## Architecture

Cambridge's architecture is a defining feature of the city, a testament to its timeless charm and appeal. The picturesque colleges, such as Trinity College and St. John's College, showcase stunning examples of architectural design spanning several centuries. The city's iconic bridges, such as the Mathematical Bridge and charming cobbled streets, evoke wonder and admiration. Other landmarks include the Bridge of Sighs at St John's College, often compared to its namesake in Venice, and the Wren Library at Trinity College, housing rare books and manuscripts.



## Getting around Cambridge

The Hilton City Centre is a 20-minute walk from the train station. The city's main attractions are within easy walking distance of the centre, so most visitors to Cambridge can explore the city on foot. Cambridge is one of the best cycling cities in the UK with over 80 miles of cycle lanes and routes.

# Sponsors

Many thanks to these sponsors for their support.

## Headline sponsor

Landmark Chambers is ranked by the legal directories as the UK's top barristers set for planning law. Our planning group is 69-strong, led by 26 silks.

Working throughout the UK, Europe and internationally, our work covers all sectors of planning, including housing, retail, commercial, leisure, transport, energy, major infrastructure, regeneration, minerals, and waste. Our expertise in public, property, environmental and EU law makes us uniquely placed to advise on the many planning matters that overlap in these areas.



[www.landmarkchambers.co.uk](http://www.landmarkchambers.co.uk)

[Visit here](#) to download planning team brochure

## Breakout session sponsors

As a leading advisor in real estate, we stand at the forefront of the UK's most pioneering sectors, including science & technology and natural capital. We are committed to providing sustainable and innovative property advice.

Our 500+ experts manage £5.2 billion in assets, collaborating with top talent and visionary clients. We aim to shape the future and improve communities' quality of life. As one of the UK's largest property consultancies with a significant planning team, our work is diverse and innovative.

[www.bidwells.co.uk](http://www.bidwells.co.uk)



Pegasus Group is a leading development consultancy offering full development lifecycle expertise bringing innovative thinking to create beautiful places which enhance the built and natural environment.

No matter the project, no matter the challenge you can rely on us to find solutions, get things done, and to make sure that you are always moving towards success – whatever your goal. We make sure that everything we do for you is Expertly Done.

[www.pegasusgroup.co.uk](http://www.pegasusgroup.co.uk)



Place Services are a traded service of Essex County Council. Our role is to support public sector organisations enabling them to deliver sustainable development. We work with over 30 local authorities across Essex, the East of England and further afield. We support local authorities to protect and enhance the environment, deliver excellent value for money and create better places. Place Services are the leading public sector provider of environmental assessment, planning, design and management services.

[www.placeservices.co.uk](http://www.placeservices.co.uk)



# Sponsors

## Breakout session sponsors

Urban&Civic are a leading Master Developer of large-scale strategic sites, we strive to be proud of the sustainable communities we are crafting, the quality of place making we are delivering and the challenges that we are overcoming through shared innovation and passion. We believe that doing things right means creating value for our shareholder and for our wider stakeholders. We are committed to keeping our promises, maximising our investment and delivering across an increasing range of sites.



[www.urbandcivic.com](http://www.urbandcivic.com)

---

## Delegate sponsors

39 Essex Chambers are one of the UK's top barristers' chambers for planning law. "A premier ser for Planning matters", (Legal 500 2024). Our planning team has 45 members including 12 silks and has continued to be involved in many high profile and high value instructions from experienced international and national clients ranging from, residents, private firms, local authorities, government departments and developers. Our barristers regularly appear in leading cases in the Supreme Court, Court of Appeal and High Court, as well as undertaking public inquiry, Crown Court and magistrates' court work.



[www.39essex.com](http://www.39essex.com)

The Carter Jonas Planning & Development team is proud to support the RTPI Young Planners' Conference and facilitate attendance for some that might not otherwise be able to attend. We focus on providing comprehensive, commercially astute and results-driven advice, and strive to add value across all service areas: consultancy, masterplanning and urban design, agency, financial viability, strategic land and regeneration. Our teams are supported by colleagues across the country in the rural, commercial, residential and infrastructure sectors.



[www.carterjonas.co.uk](http://www.carterjonas.co.uk)

---

## Event sponsor

DLP Planning Ltd is part of the DLP Consulting Group, a multi-disciplinary practice encompassing town planning, architecture, masterplanning, environmental and transportation planning. DLP Planning Ltd provides advice to a wide array of clients in the public and private sectors, including government departments and executive boards, local government, national, regional, and local house builders, private companies and financial institutions, landowners, and private estates, as well as individual members of the public, community groups and organisations.



[www.dlpconsultants.co.uk](http://www.dlpconsultants.co.uk)



## Exhibition sponsors

We're facilitators of major development and infrastructure projects.

Our services are provided by our highly skilled teams to navigate even the most complex of projects.

- Highways, Environmental & Transition
- Cost and Commercial
- Civil Engineering
- Development Management
- Structural Engineering
- Mechanical & Electrical Engineering

We'll always strive to deliver the Brookbanks' difference, innovating and driving every project with the aim of maximising value creation and minimising development costs for our clients' benefit.

[www.Brookbanks.com](http://www.Brookbanks.com)



CALA's North Home Counties division delivers new homes across Cambridgeshire, Essex and Suffolk, delivering around 330 new homes per year. Our team's extensive local knowledge, supported by decades of industry expertise thanks to Cala's national presence, supports our expansion plans across our patch.

Properties range from starter homes to spacious family properties, including much-needed affordable housing. We create vibrant, well-integrated, and sustainable communities with exceptionally designed and built homes, ensuring an outstanding home-buying experience.

[www.cala.co.uk](http://www.cala.co.uk)



Carrington West is an award-winning recruitment company providing high calibre talent to the UK built environment sector. Our dedicated national town planning recruitment team service cross-sector clients such as local authorities, private SMEs, multi-discipline consultancies and developers across the UK. We recruit professional town planning experts from graduate level through to executive and director, including development management, planning policy, planning enforcement, building control, regeneration, conservation and urban design. Founded in 2011, we have grown quickly due to the passion, integrity and excellence of our people.

[www.carringtonwest.com](http://www.carringtonwest.com)



Paul Basham Associates pride ourselves on providing high quality, expert advice and support on all aspects of transport planning, travel planning, civil and structural engineering. Our highly skilled and experienced professional team have a wealth of experience of working with both the public and private sectors, from development feasibility through to detailed highway design. We are committed to delivering end-to-end, outstanding solutions for our clients, using an intelligent and proactive approach.

[www.paulbashamassociates.com](http://www.paulbashamassociates.com)



Taylor Wimpey UK, part of Taylor Wimpey plc, is a customer-focused homebuilder, committed to delivering new homes within thriving communities, in a safe and environmentally responsible manner and with customers at the heart of its decision making. It operates from 22 regional businesses across the UK. In 2022 Taylor Wimpey delivered 13,773 homes (including joint ventures) and contributed £455 million to local communities via planning obligations.

[www.taylorwimpey.co.uk](http://www.taylorwimpey.co.uk)



## Lanyard sponsor

Savills is the largest planning consultancy in the UK, with over 350 members operating from 23 offices across the principal regional markets. We deliver planning solutions that maximise the value of our clients' property assets, taking into account the planning policy context, technical and environmental factors, local community considerations and overall sustainability. We provide a range of specialist services to ensure the highest standard of advice in all aspects of the planning process.



[www.savills.co.uk/services/planning.aspx](http://www.savills.co.uk/services/planning.aspx)

---

## Stationary sponsors

### “Energetic and Proactive Planning Advice”

With over 45 collective years across public and private sector planning experience, in both urban and rural locations, James Bailey Planning Ltd. (JBPL) continues to provide a comprehensive range of bespoke planning services to national house builders and private individuals alike.



Local intelligence is a key ingredient to good planning, and with our mantra of “Energetic and Proactive Planning Advice”, JBPL continues to build a strong reputation across East Anglia.

[www.jamesbaileyplanning.com](http://www.jamesbaileyplanning.com)

Persimmon is one of the UK's leading 5-star housebuilders, with 29 regional businesses and more than 14,800 homes built last year. We are committed to the highest standards of design, construction and service by delivering excellence always and putting our customers at the heart of all we do. We're proud to be building good quality, sustainable homes, providing career opportunities, supporting jobs in the supply chain, and contributing towards the sustainable development of local communities.



[www.persimmonhomes.com](http://www.persimmonhomes.com)





## Study tour sponsors

Turley are trusted independent advisors with restless ambition to shape a more sustainable future. We offer expert advisory services for the built environment and beyond, working collaboratively with our clients to deliver places and communities that thrive.

We combine professional expertise with in-depth market knowledge and deploy our services – Business Cases and Funding, Design, Economics, EIA, Expert Witness, Heritage, Townscape and Landscape, Planning, Strategic Communications, Sustainability and ESG – individually or collectively to meet client needs in the most effective way.

[www.turley.co.uk](http://www.turley.co.uk)

As a leading advisor in real estate, we stand at the forefront of the UK's most pioneering sectors, including science & technology and natural capital. We are committed to providing sustainable and innovative property advice.

Our 500+ experts manage £5.2 billion in assets, collaborating with top talent and visionary clients. We aim to shape the future and improve communities' quality of life. As one of the UK's largest property consultancies with a significant planning team, our work is diverse and innovative.

[www.bidwells.co.uk](http://www.bidwells.co.uk)

# Turley



---

## Gala drinks sponsor

Axis Land Partnerships is a land promotion and development company. We take on all the work needed to achieve a planning consent whether we are promoting your site long-term through the local plan or preparing a detailed application for submission to the local planning authority. Our expertise is based on a wealth of experience in planning, construction and infrastructure and the flexibility and willingness to explore new ways of working.

[www.axislp.com](http://www.axislp.com)

# AXIS

LAND PARTNERSHIPS



# Conference programme

Friday 11 October 2024

**9.00 am** Registration

**9.30 am** Welcome address

**Lindsey Richards FRTPI** – RTPI President 2024

**Melissa Murphy KC** - Barrister, Landmark Chambers

**Errin Marshall** - Chair, RTPI East of England Young Planners Committee

**10.10 am** Welcome and keynote speech

**Stephen Kelly** – Director of Planning and Economic Development, Greater Cambridge Shared Planning

**10.30 am** Growth and the Historic Environment

This panel session examines the possible tensions between growth and historic preservation. How can we balance new development whilst retaining a sense of place, and respecting the setting and significance of our historic buildings?

**Tim Murphy** - Historic Environment Manager, Place Services

**Cllr Katie Thornburrow** - Councillor, Cambridge Council

**Daniele Haynes** - Associate Heritage Consultant, Bidwells

**Katharine Elliot** - Barrister, Landmark Chambers

**Chairs:**

**Katie Fowler** - RTPI East of England Young Planner Vice Chair

**Errin Marshall** - RTPI East of England Young Planner Chair

**11.30 am** Break

**12.00 pm** Growth and the Natural Environment

This panel session examines the possible tensions between growth and the preservation of the natural environment. How can we better connect our rural and urban areas and provide the infrastructure our growing population needs?

**John Cornell** - Natural Environment Team Leader, Greater Cambridge Shared Planning Services

**Mark Hodgson** - Director, Savills

**Professor Tom Holbrook** - Director, 5th Studio

**Alex Shattock** - Barrister, Landmark Chambers

**Chairs:**

**Errin Marshall** - RTPI East of England Young Planner Chair

**John Mason** - Planning Consultant, Carter Jonas

Sponsored by Landmark Chambers

**LANDMARK**  
CHAMBERS



# Conference programme

1.00 pm Lunch

2.00 pm Breakout sessions

Delegates can choose one of the following sessions.

## BREAKOUT 1

### Sustainable Tourism and Rural Economies

England's tourism sector contributes £106 billion to the British economy and supports 2.6 million jobs. It brings many benefits – but also causes issues of overcrowding, litter and pollution. How can we attract visitors beyond a few honey-pot destinations to lesser-known places?

**Maria Manion** - Chief Executive, Cambridge BID

**Rob Pearce** - Head of Parks Consultancy, Nene Park Trust

Chair: **Asif Ali** - Senior Planning Officer, Peterborough City Council

## BREAKOUT 2

### Development in the Countryside and Green Belt

The Green Belt is a highly emotive and often misunderstood designation that affects large parts of the Eastern region and beyond. How can we successfully release land from within the Green Belt in a way that promotes sustainable development and addresses misconceptions?

**Sam Hollingworth** - Associate Partner, Ceres

**Matthew Hare** - Planning Director, Axis Land Partnerships

**Andrea Pearson** - Senior Planning Policy Officer, Brentwood Borough Council

Chair: **Emily Grapes** - Planning Consultant, Carter Jonas

## BREAKOUT 3

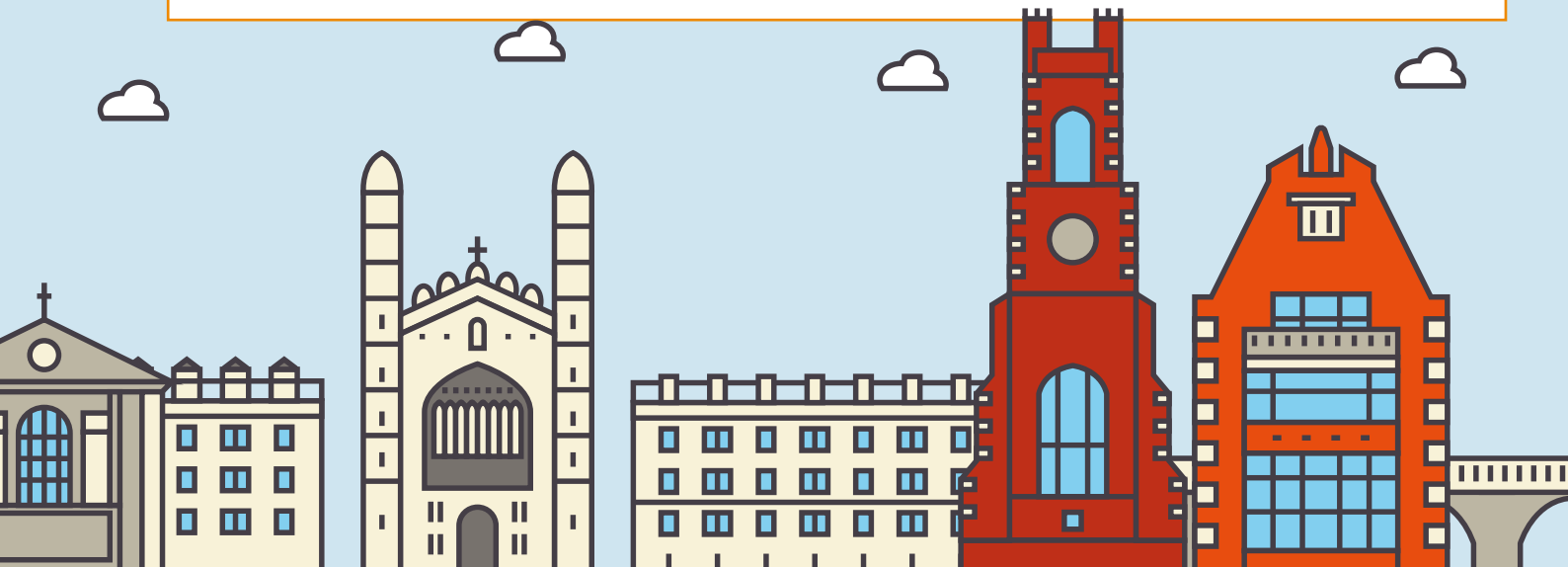
### Local Nature Recovery Strategies

Local Nature Recovery Strategies have the potential to play a key part in responding to the nature crisis and identifying off-site provision of biodiversity net gain at a regional level. Find out more about their relationship to planning.

**Helena Taylor** - Local Nature Recovery Coordinator, Essex County Council

**Gabriella Yeomans** - Local Nature Recovery Strategy Officer, Cambridgeshire County Council

Chair: **Bethany Jones** - Principal Planning Policy Officer, Colchester City Council



# Conference programme

## BREAKOUT 4

### Importance of Clusters to the Life Science Sector and the Changing Dynamic between City and Campus

In this breakout session, Bidwells will explore the evolution of life sciences in Cambridge, the power of clusters, and the crucial role of thoughtfully designed urban spaces in shaping the future of innovation and attracting the best talent in a global market.

**Guy Kaddish** - Partner, Planning, Bidwells

**Mark Callendar** - Research Partner, Bidwells

**Philippa Kelly** - Strategic Sites Manager, Greater Cambridge Shared Planning Service

**Edward Crooks** - Architect, Hawkins Brown

Chair: **Sophia Nitschke** - Planner, Bidwells LLP

Sponsored by Bidwells



## BREAKOUT 5

### Urban Design and Placemaking

This breakout session will focus on the “subjectivity” that surrounds urban design and will explore how design can be made less subjective through tools such as design guides and codes.

**Maggie Baddeley** – Co-Vice chair, Essex Quality Review Panel

**Chris King** - Design Champion and Specialist Services Manager, East Suffolk Council

Chair: **Katie Fowler** - RTPi East of England Young Planner Vice Chair



# Conference programme

## 3.15 pm Study Tours

Delegates will have a choice of five tours on the following topics.

### 1. CB1 and the Regeneration of Cambridge Station

Once dominated by outdated industrial parks and offices, CB1 has been revitalized into Cambridge's premier business hub, now home to global giants like Microsoft and Amazon. Through this redevelopment, Bidwells will highlight the strategies and challenges involved in turning a historically industrial space into a thriving centre for innovation and commerce.

**Alan Barrett** - Brookgate

**Alison Wright** - Bidwells

Sponsored by Bidwells



### 2. Cambridge's Historic Centre

Cambridge has 67 Grade I listed buildings and an extensive number of conservation areas. This walking tour of the historic city centre seeks to understand how development balances sustainable growth whilst maintaining the historic significance of the city.

**Charlotte Bailey** - Turley

**Sophie Pain** - Turley

**Colin Moses** - MCW Architects

Sponsored by Turley



### 3. Eddington: North West Cambridge

Eddington is a vibrant and sustainable mixed-use community developed by the University as a mixture of key-worker and market housing dwellings, along with a new town centre. It is designed not just as a place to live, but for the community to thrive.

**Jonathan Brookes** - Greater Cambridge Shared Planning

### 4. Cambridge Biomedical Campus

Cambridge Biomedical Campus is one of Europe's most important research clusters transforming the city into a global hub for life sciences, which employs over 20,000 people.

**Ed Watson** - Cambridge Biomedical Campus Ltd

**Richard Oakley** - No.6 Developments

### 5. Cambridge's Cycle Infrastructure

Cambridge is the cycling capital of the UK, with one in three residents cycling to work. Join us on a tour of new cycle infrastructure to hear how the city has achieved this modal shift.

**Paul van de Bulk** - Greater Cambridge Partnership

**Jonathan Camp** - Greater Cambridge Partnership

# Conference programme

## 6.30 pm Gala Dinner

This year's gala dinner is taking place at the Graduate Hotel.

This ticketed event is an evening of dinner, drinks and entertainment that will be hosted at this elegant riverside venue in the historic heart of Cambridge city centre.

Drinks sponsored by Axis Land Partnerships

# AXIS

LAND PARTNERSHIPS

---

## Saturday 12 October 2024

### 9.15 am Refreshments

### 10.00 am Law Update

39 Essex Chambers will bring attendees up to speed with the most recent and impactful legal decisions.

**Stephanie David** - Barrister, 39 Essex Chambers

### 11.00 am Break

### 11.15 am Planning In the first 100 Days

At 99 days after the formation of the new Labour Government, we will look back at the reforms made to the planning system so far, and what further changes we may come to expect.

**Rachael Ferry-Jones** - Principal Consultant, Planning Advisory Service

**Colin Brown** - Planning Consultant, Carter Jonas

**Chair: Asif Ali** - Senior Planning Officer, Peterborough City Council

### 12.15 pm Lunch and breakout sessions 4 and 5

### 1.15 pm Lunch and breakout sessions 1,2 and 3

**Please note** - Lunch will take place in the restaurant and will be split between two sittings. The breakout you are assigned to will determine which lunch sitting you attend.



# Conference programme

## Breakout Sessions

Delegates can choose one of the following sessions:

### BREAKOUT 1

#### How do we deliver affordable housing?

This roundtable discussion with contributions from experts in rural housing, policy, council housebuilding, and homelessness, will ask delegates a simple question: how do we deliver affordable housing?

**Peter Canavan** - Partner, Carter Jonas

**Paul Morrish** - Chief Executive, LandAid

**Lewis Herbert** - Manager, Allia Future Homes

**Chair: Emily Grapes** - Planning Consultant, Carter Jonas

### BREAKOUT 2

#### Creating Landscape Led Developments

In this breakout session, Place Services will explore how landscape led developments can be delivered to achieve a more efficient use of land, whilst enhancing biodiversity net gain and creating healthy places.

Peter Dawson - Built Environment Manager, Place Services

#### Chairs:

**Katie Fowler** - RTPi East of England Young Planner Vice Chair

**Errin Marshall** - RTPi East of England Young Planner Chair

Sponsored by Place Services



### BREAKOUT 3

#### Connectivity and Infrastructure

Lack of infrastructure is often the loudest public objection to development. This session will explore how developments can present opportunities and unlock barriers to ensure greater coverage and connectivity through some of the largest infrastructure projects in the East of England.

**Charlotte Mitchell** - Chief Planning Officer, National Grid

**Kevin Roeton** - National Grid

**Chair: Errin Marshall** - RTPi East of England Young Planner Chair

### BREAKOUT 4

#### Collaborative Planning: Revolutionising the Planning Service

This breakout session looks at how we can create effective working partnerships between the public and private sector. Discussing how we can deliver planning differently, what barriers we face and how these can be overcome?

**Jim Newton** - Service Director, Peterborough City Council

**Nicky Parsons** - Executive Director, Pegasus

**Daniel Fryd** - Director, Luminat

**Chair: Genny Middlemast** - Land Planner, Persimmon Homes Essex

Sponsored by Pegasus



# Conference programme

## BREAKOUT 5

### Connecting people and place in a rural-urban context

Urban&Civic, the UK's leading Master Developer, will lead a discussion on how to connect new developments into their contexts, considering social integration, well-being and legacy. What lessons can be learnt from Urban&Civic's experience at Waterbeach and Alconbury?

**Rebecca Britton** - Regional Director Communities, Urban&Civic

**Mike Jenner MRTPI** - Development Manager, Urban&Civic

**Chair: John Mason** - Planning Consultant, Carter Jonas

Sponsored by Urban&Civic

Urban&Civic

### 2.15 pm Right Development in the Right Place

This session focuses on the big question: how can we achieve the right development in the right place? Our speakers will delve into some of the key challenges and solutions covered over the previous two days.

**Andy Moffat** - Director / Head of Department, Planning, Savills

**David Ames** - Town Planning Lecturer, University of Hertfordshire

**Emma Goodings** - Director of Place, Brentwood and Rochford Councils

#### Chairs:

**Bethany Jones** - Principal Planning Policy Officer, Colchester City Council

**Jade Barrett** - Graduate Planner, Savills

### 3.00 pm Closing remarks by RTPI President 2024 and Young Planners' Conference 2025 handover

### 3.15 pm Event close





## Useful resources



### On the socials

Connect with other [Young Planners on the LinkedIn group](#).

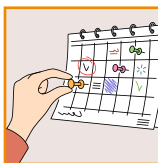
Join the conversation for this conference on LinkedIn with #YPCConf2024.



### APC

Find [APC webinars](#) on our events calendar.

Visit our website for [APC advice](#).



### Other events

Find other events for Young Planners on our [events calendar](#).



### Chief Planners for Tomorrow

Chief Planners of Tomorrow is a work-shadowing scheme offering RTPI Young Planners the chance to step into the shoes of a chief planning officer for the day. The next entry date is March 2025. To find out more, [visit here](#).



### The Planner Jobs

Find out more about how our official job board [The Planner Jobs](#) can help you to recruit planning professionals across all sectors, disciplines and levels by having a chat with Gill Rock during the breaks.

## Guides and reports from our Policy and Research teams



### Strategic Planning

This recent research revealed overwhelming support for effective strategic planning in England across the public and private sectors, with 96% of planners agreeing that a change to current practice is needed.



### Beginners' Guide to Planning Enforcement

A guide aimed at those who are new to Planning Enforcement.



### Planning Enforcement Handbook for England

The guide for planning enforcement officers in England was updated in April 2024 for the package of enforcement measures included in the Levelling Up and Regeneration Act 2023 that came into force on 25 April 2024.



**RTPI** Young Planners  
Royal Town Planning Institute

**Thanks for attending this  
conference.**

**Don't forget to share your  
content with #YPCConf2024**

Registered charity number: 262865.  
Scottish registered charity number: SC 037841

